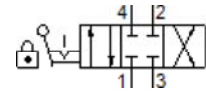
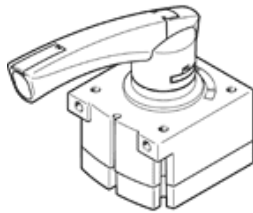



hand lever valve

VHER-P-H-B43C-B-G12

Part number: 3192075

FESTO
 General operating conditions

 Data sheet

Data sheet

| Feature | Value |
|---|---|
| Valve function | 4/3 closed |
| Type of actuation | manual |
| Width | 80 mm |
| Standard nominal flow rate | 3,800 l/min |
| Operating pressure | 0 ... 10 bar |
| Note on operating pressure | Vacuum operation -0.95 to 0 must not be connected to port 3 In the case of dual-pressure operation, the pressure at port 1 must be higher than at port 3 |
| Design structure | Rotary slide valve |
| Nominal size | 12 mm |
| Exhaust-air function | throttleable |
| Instructions for use | Actuate only manually |
| Actuator lock | with accessories, lockable |
| Sealing principle | Hard |
| Type of piloting | direct |
| Flow direction | non reversible |
| Freedom from overlap | Yes |
| Switching position indicator | with accessories |
| Operating medium | Compressed air in accordance with ISO8573-1:2010 [7:4:4] |
| Note on operating and pilot medium | Lubricated operation possible (subsequently required for further operation) |
| Corrosion resistance classification CRC | 2 - Moderate corrosion stress |
| Medium temperature | -20 ... 80 °C |
| Ambient temperature | -20 ... 80 °C |
| Actuation torque | 5 Nm |
| Product weight | 740 g |
| Mounting type | Optional Front panel installation with through hole |
| Pneumatic connection, port 1 | G1/2 |
| Pneumatic connection, port 2 | G1/2 |
| Pneumatic connection, port 3 | G1/2 |
| Pneumatic connection, port 4 | G1/2 |
| Materials note | Free of copper and PTFE Conforms to RoHS |
| Material seals | NBR |
| Material housing | Aluminium die cast |
| Material lever | PA |